

MADE IN  
ALABAMA

Alabama Department of Commerce

WAL.PA.PA.NE.WOR.COM

## New Jobs



### NEW JOBS

**\$8.7**  
BILLION

New Capital  
Investment\*

**17,026**

New Jobs  
Created

Source: Alabama Department of Commerce's 2018 New and Expanded Industry Report

 **AIDT** | WE ARE  
WORKFORCE  
DEVELOPMENT

MADE IN  
ALABAMA

 ALABAMA  
WORKS!

# 2018 Auto Projects



## 2018 AUTO PROJECTS

**\$3.3**  
BILLION

New Capital  
Investment\*

**5,477**

Anticipated  
Jobs

Source: Alabama Department of Commerce estimates



# 2018 Rural Development



## 2018 RURAL DEVELOPMENT

**\$1.1**  
BILLION

New Capital  
Investment

**1,128**

New and Future  
Jobs Created

Source: Alabama Department of Commerce estimates






**We're working to elevate workforce development to a new level.**



## **New Initiatives**



**New initiatives will fill the skilled worker pipeline.**

- AlabamaWorks
- Alabama Office of Apprenticeship
- AIDT Recruitment Initiative
- Strong Start, Strong Finish
- Success Plus

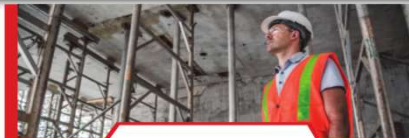


## Success Plus will prepare Alabama for the future

- Goal: Add 500,000 high-skilled employees to Alabama's workforce by 2025
- Tactic: Address Alabama's skills gap by equipping workers with industry-recognized skills through certificates, credentials or degrees
- Outcomes: Support for additional growth, compete for new businesses, improve overall quality of life



## Alabama Workforce Council



# Governor's Office

Strong Start,  
Strong Finish: An  
Education-to-  
Workforce Vision  
for Alabama



## Five Strong Start, Strong Finish benchmarks

1

Pre-k readiness to ensure that all of Alabama's four year old are prepared for an excellent early childhood education experience;

2

school readiness to ensure that all of Alabama's five and six year old enter kindergarten and first grade with advanced skills;

3

literacy and numeracy by age eight to ensure that all of Alabama's students are prepared to persist through difficult coursework and remain invested in school in advanced grades;

4

career exploration and discovery so that all students understand how to connect their interests and aptitudes with academic skills they learn in the classroom and the many career opportunities that exist across Alabama—children cannot know what they want to be unless they have seen the possibilities;

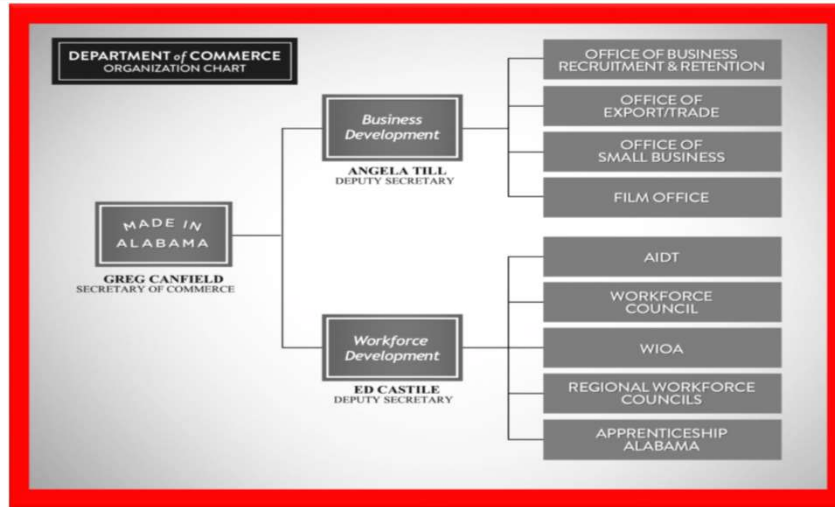
5

college and/or career readiness so that all students graduate high school prepared to enter into postsecondary education or into an occupation within a in-demand, high-wage field.



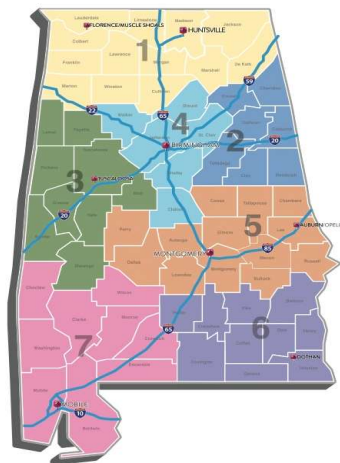


## Alabama Department of Commerce



## REGIONAL WORKFORCE COUNCILS

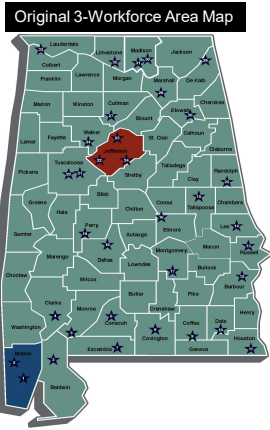
### 7 REGIONS



- Full-time staff in each Region
- RWC Liaisons for each Region
- Seven (7) Councils also serve as WIOA Local Board



# WIOA Local Boards Realignment



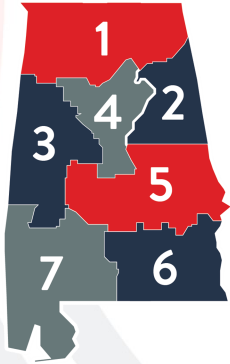
## ALABAMA OFFICE OF APPRENTICESHIP

Alabama Office of Apprenticeship supports industry-specific, on-the-job training, and classroom theory taught over a one to six year period. Employers provide apprentices with progressive wages, giving them an “earn while you learn” training experience that specifically meets a company’s workforce needs.

- Industry Focused Sectors:**
- Healthcare
  - Construction/Carpentry
  - Information Technology (IT)
  - Distribution/Transportation/Logistics
  - Advanced Manufacturing

**PROGRAM DIRECTOR**

- Region 1**  
 Katanga Mants  
 334.590.9402  
 kmants@aidt.edu
- Region 2 & 4**  
 Jessica Falls  
 205.601.5803  
 jfalls@aidt.edu
- Region 3 & 7**  
 Sophia Guan  
 334.274.8020  
 sguan@aidt.edu
- Region 5 & 6**  
 Patsy Richards  
 334.546.4984  
 prichards@aidt.edu





ALABAMAWORKS!

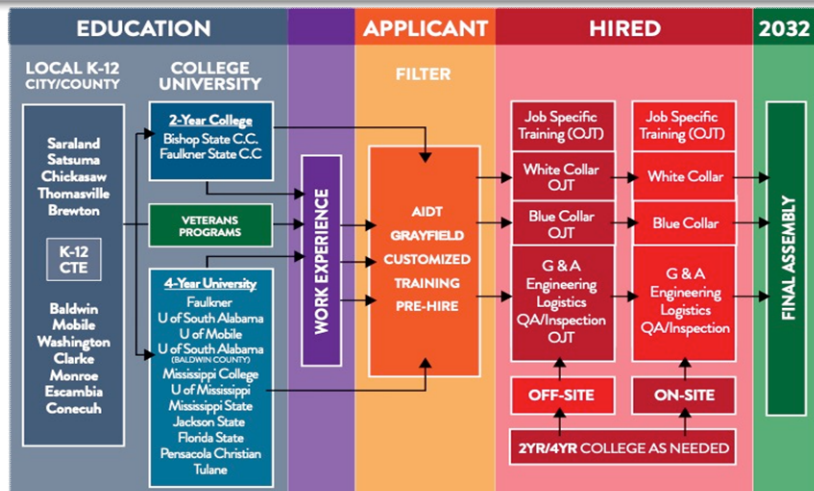


 WE ARE WORKFORCE DEVELOPMENT

MADE IN ALABAMA



PROJECT



 WE ARE WORKFORCE DEVELOPMENT

MADE IN ALABAMA





## AIDT PARTNERSHIPS

- ◆ **Alabama Department of Commerce**
- ◆ **EDPA** – Economic Development Partnership of Alabama
- ◆ **Education:**
  - > Alabama Community College System (*includes Adult Education*)
  - > ATN – Alabama Technology Network
  - > K-12
  - > Universities
- ◆ **ADECA** – Alabama Department of Economic and Community Affairs
- ◆ **ADRS** – Alabama Department of Rehabilitation Services
- ◆ **Alabama Career Center System**
- ◆ **Local Economic Developers**



**AIDT** CENTERS OF EXCELLENCE



# ROBOTICS TECHNOLOGY PARK



ROBOTICS TECHNOLOGY PARK TANNER, AL

GOODWYN | MILLS | CAWOOD



# Robotics Technology Park- Phase 1



**RTP**  
PHASE 1

**RTP**  
PHASE 1



# Robotics Technology Park



Mobile Training Unit



# RTP Mobile Training Unit



Mobile Training Unit



# MARITIME TRAINING CENTER



 **AIDT** | WE ARE WORKFORCE DEVELOPMENT

 MADE IN ALABAMA

 ALABAMA WORKS!

# MARITIME TRAINING CENTER



 **AIDT** | WE ARE WORKFORCE DEVELOPMENT

 MADE IN ALABAMA

 ALABAMA WORKS!

# AIDT TOTAL WORKFORCE DELIVERY SYSTEM

- ◆ **Applicant Recruitment**
- ◆ **Trainee Selection**
  - Application Reviews
  - Applicant Interviews
- ◆ **Pre-employment Training**
  - Skills/Capabilities/Learning Ability Demonstrated
  - Company Teamwork, Job Tasks Simulated
- ◆ **On-the-Job Training**
- ◆ **Media Services/Program Development**
- ◆ **Leadership Development**
- ◆ **Maintenance Assessment/ Training**
- ◆ **OSHA/Safety**
- ◆ **EMPACT**
- ◆ **AIDT Productions**
- ◆ **Specialty Centers:**  
AWTC, MRWTC, RTP, MTC



# ALABAMA AVIATION MANUFACTURERS



# MAJOR PROJECTS



Mercedes-Benz



HONDA



TOYOTA



HYUNDAI



AIRBUS

MAZDATOYOTA



POLARIS

Remington



GE Aviation



LOCKHEED MARTIN



ArcelorMittal

outokumpu



AUSTAL



MADE IN  
ALABAMA

Alabama Department of Commerce